



Farningham Close | | Maidstone | ME14 5QX

£290,000



**LEAFY
ESTATES**

Key features

- Popular Vinters Park location
- End of terrace
- Front and rear gardens
- Open-plan lounge/dining room
- No onward chain
- Garage in block

Description

Offered with no forward chain, we are delighted to bring to the market this two bedroom end of terrace property located on the ever popular Vinters Park development

Directions



Offered with no forward chain, we are delighted to bring to the market this two bedroom end of terrace property located on the ever popular Vinters Park development, within close proximity of Maidstone town centre and on the northern side of the town with easy access to the M20.

The ground floor accommodation features a spacious lounge/dining room and fitted kitchen. The first floor offers two double bedrooms and a family bathroom. There are front and rear gardens and a garage-en-bloc.

Accommodation comprises:

Entrance Hallway: With wooden parquet flooring

Lounge/dining room: With wood laminate flooring, under stairs cupboard

Kitchen: With wood laminate flooring, wall and floor mounted kitchen units

Bedroom 1: With wood laminate flooring and built-in cupboard with integrated oven, hob and fridge freezer

Bedroom 2: With wood laminate flooring and built-in cupboard

Landing: With airing cupboard

Bathroom: With shower over bath, tiled walls, tiled floor

Front garden and fenced rear and side garden with gate to rear, garage in block to rear

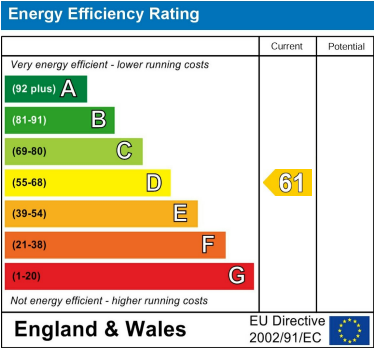
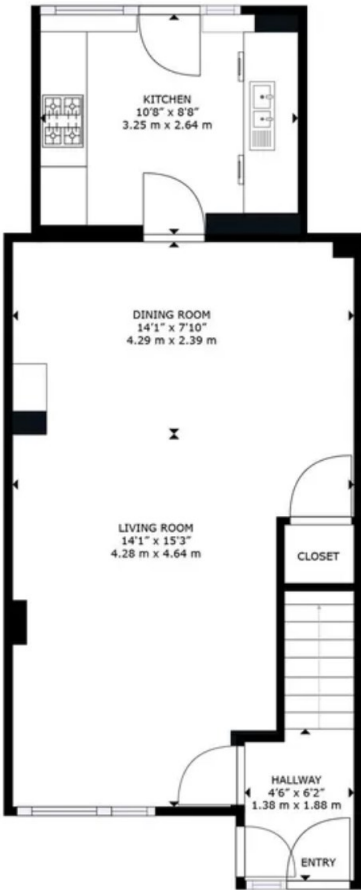
EPC Rating: D

Location

Situated on the popular Vinters Park development within walking distance of Maidstone town centre and reputable schools and on the northern side of the town with easy access to the M20.



Floor plans



Council Tax Band C EPC Rating D



68 South Hill Avenue
Harrow
HA2 0NH
02081501988
sales@leafyestates.co.uk
leafyestates.co.uk